

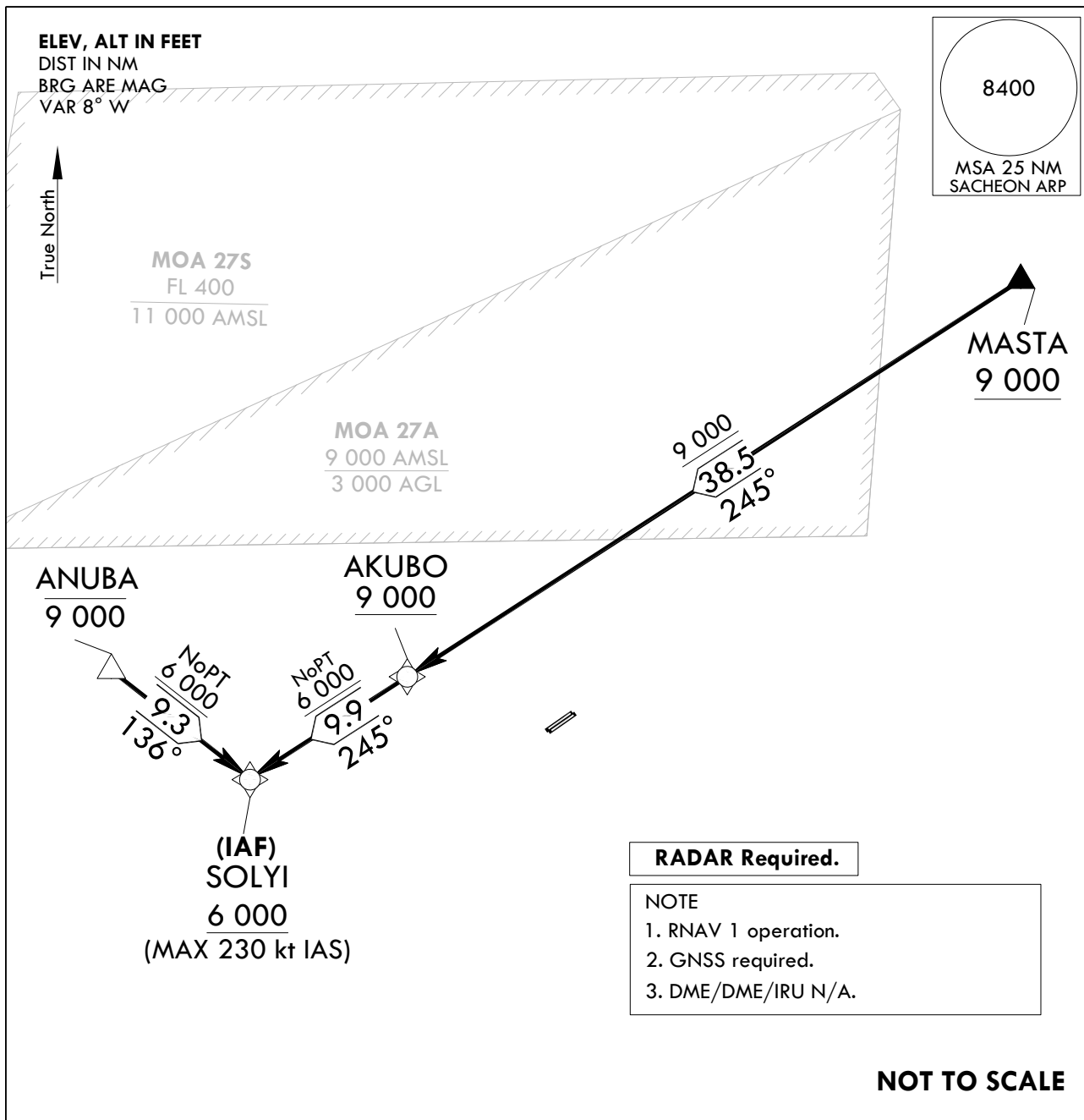
**STANDARD ARRIVAL CHART  
INSTRUMENT(STAR)**

TRANSITION ALT 14 000  
TRANSITION LVL FL 140

SACHEON APP 135.4 344.7  
SACHEON TWR 118.675 236.6  
305.4

**SACHEON/Sacheon(RKPS)**  
**RWY 06L/R**  
**RNAV SOLYI 1**

Note : Arrival under U.S. TERPS.



**ARRIVAL ROUTE DESCRIPTION**

LANDING RWY 06L/R : Expect RNP approach following transition routes.

The following are transition routes.

ANUBA Transition : From ANUBA at or below 9 000 ft on track 136° to SOLYI at or above 6 000 ft.

MASTA Transition : From MASTA on track 245° to AKUBO at or above 9 000 ft, then track 245° to SOLYI  
at or above 6 000 ft.

Change : Information of MASTA(reporting requirement) and SOLYI(IAF).

Standard Instrument Arrival Procedure Coding Tables

RNAV SOLYI 1 - MASTA Transition

Serial Number	Path Descriptor	Waypoint Identifier	Fly-over	Course/Track °M(°T)	Distance (NM)	Turn direction	Altitude (ft)	Speed (kt)	Coordinates	VPA/ RDH	Navigation specification	Remarks
001	TF	MASTA	-	-	-	-	+9 000	-	35°28'47.0"N 128°33'39.6"E	-	RNAV 1	-
002	TF	AKUBO	-	245 (236.9)	38.5	-	+9 000	-	35°07'37.1"N 127°54'22.8"E	-	RNAV 1	-
003	TF	SOLYI	-	245 (236.5)	9.9	-	+6 000	-230	35°02'09.4"N 127°44'21.6"E	-	RNAV 1	IAF

RNAV SOLYI 1 - ANUBA Transition

Serial Number	Path Descriptor	Waypoint Identifier	Fly-over	Course/Track °M(°T)	Distance (NM)	Turn direction	Altitude (ft)	Speed (kt)	Coordinates	VPA/ RDH	Navigation specification	Remarks
001	TF	ANUBA	-	-	-	-	-9 000	-	35°07'45.9"N 127°35'22.8"E	-	RNAV 1	-
002	TF	SOLYI	-	136 (127.2)	9.3	-	+6 000	-230	35°02'09.4"N 127°44'21.6"E	-	RNAV 1	IAF

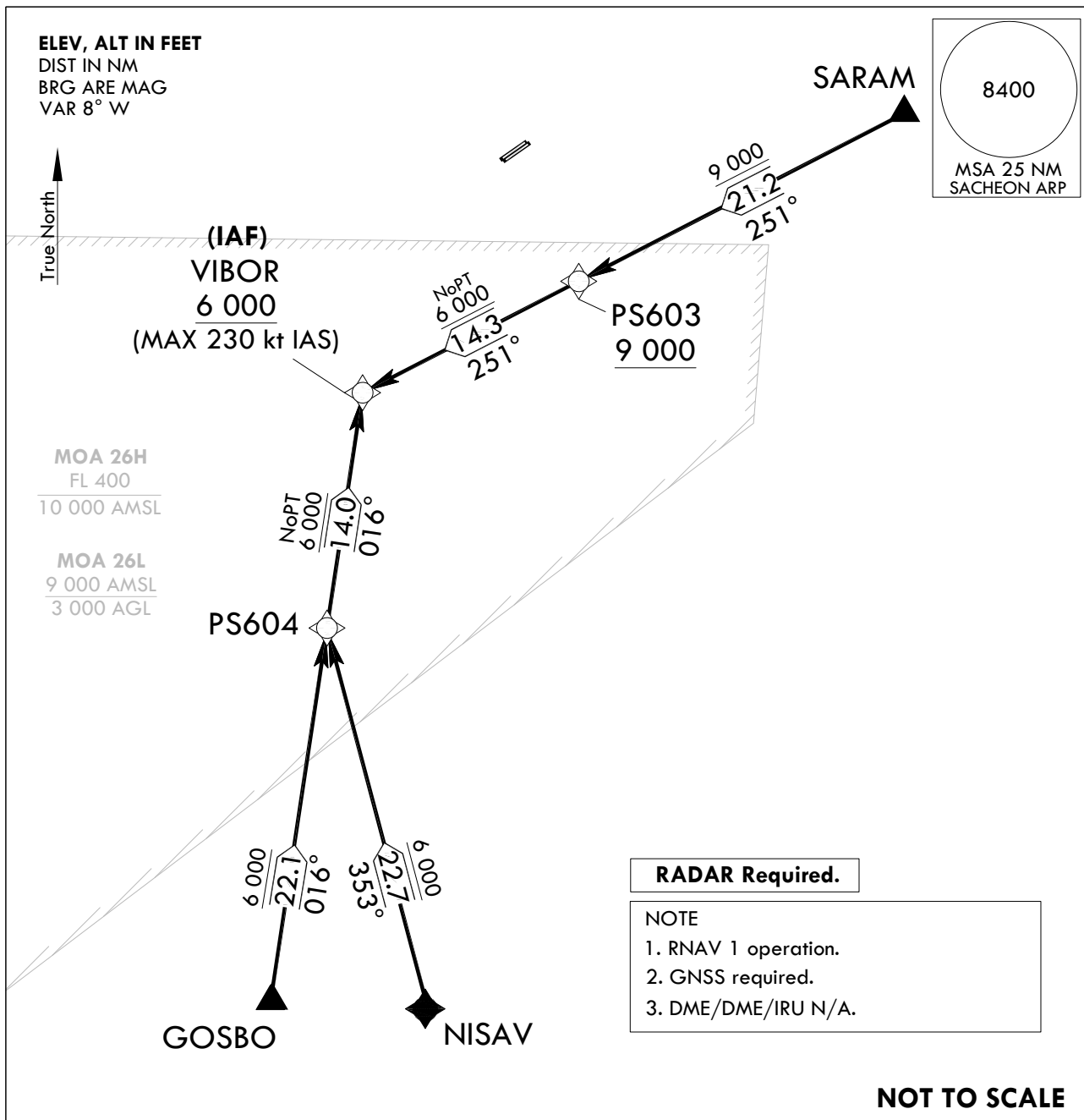
**STANDARD ARRIVAL CHART  
INSTRUMENT(STAR)**

TRANSITION ALT 14 000  
TRANSITION LVL FL 140

SACHEON APP 135.4 344.7  
SACHEON TWR 118.675 236.6  
305.4

**SACHEON/Sacheon(RKPS)**  
**RWY 06L/R**  
**RNAV VIBOR 1**

Note : Arrival under U.S. TERPS.



**ARRIVAL ROUTE DESCRIPTION**

LANDING RWY 06L/R : Expect RNP approach following transition routes.

The following are transition routes.

SARAM Transition : From SARAM on track 251° to PS603 at or above 9 000 ft,  
then track 251° to VIBOR at or above 6 000 ft.

GOSBO Transition : From GOSBO on track 016° to PS604 and track 016° to VIBOR at or above 6 000 ft.

NISAV Transition : From NISAV on track 353° to PS604 and track 016° to VIBOR at or above 6 000 ft.

Change : Information of SARAM, GOSBO, NISAV(reporting requirement) and VIBOR(IAF).

SACHEON/Sacheon(RKPS)  
RWY 06L/R  
RNAV VIBOR 1

## AERONAUTICAL DATA TABULATION

## Standard Instrument Arrival Procedure Coding Tables

RNAV VIBOR 1 - SARAM Transition

Serial Number	Path Descriptor	Waypoint Identifier	Fly-over	Course/Track °M(°T)	Distance (NM)	Turn direction	Altitude (ft)	Speed (kt)	Coordinates	VPA/ RDH	Navigation specification	Remarks
001	TF	SARAM	-	-	-	-	-	-	35°07'36.3"N 128°31'46.7"E	-	RNAV 1	-
002	TF	PS603	-	251 (242.5)	21.2	-	+9 000	-	34°57'46.5"N 128°08'57.1"E	-	RNAV 1	-
003	TF	VIBOR	-	251 (242.2)	14.3	-	+6 000	-230	34°51'06.1"N 127°53'36.3"E	-	RNAV 1	IAF

RNAV VIBOR 1 - GOSBO Transition

Serial Number	Path Descriptor	Waypoint Identifier	Fly-over	Course/Track °M(°T)	Distance (NM)	Turn direction	Altitude (ft)	Speed (kt)	Coordinates	VPA/ RDH	Navigation specification	Remarks
001	TF	GOSBO	-	-	-	-	-	-	34°15'16.8"N 127°47'34.4"E	-	RNAV 1	-
002	TF	PS604	-	016 (007.9)	22.1	-	+6 000	-	34°37'14.8"N 127°51'15.7"E	-	RNAV 1	-
003	TF	VIBOR	-	016 (007.9)	14.0	-	+6 000	-230	34°51'06.1"N 127°53'36.3"E	-	RNAV 1	IAF

RNAV VIBOR 1 - NISAV Transition

Serial Number	Path Descriptor	Waypoint Identifier	Fly-over	Course/Track °M(°T)	Distance (NM)	Turn direction	Altitude (ft)	Speed (kt)	Coordinates	VPA/ RDH	Navigation specification	Remarks
001	TF	NISAV	-	-	-	-	-	-	34°15'19.0"N 127°58'35.0"E	-	RNAV 1	-
002	TF	PS604	-	353 (344.6)	22.7	-	+6 000	-	34°37'14.8"N 127°51'15.7"E	-	RNAV 1	-
003	TF	VIBOR	-	016 (007.9)	14.0	-	+6 000	-230	34°51'06.1"N 127°53'36.3"E	-	RNAV 1	IAF

Change : Information of remarks for VIBOR.

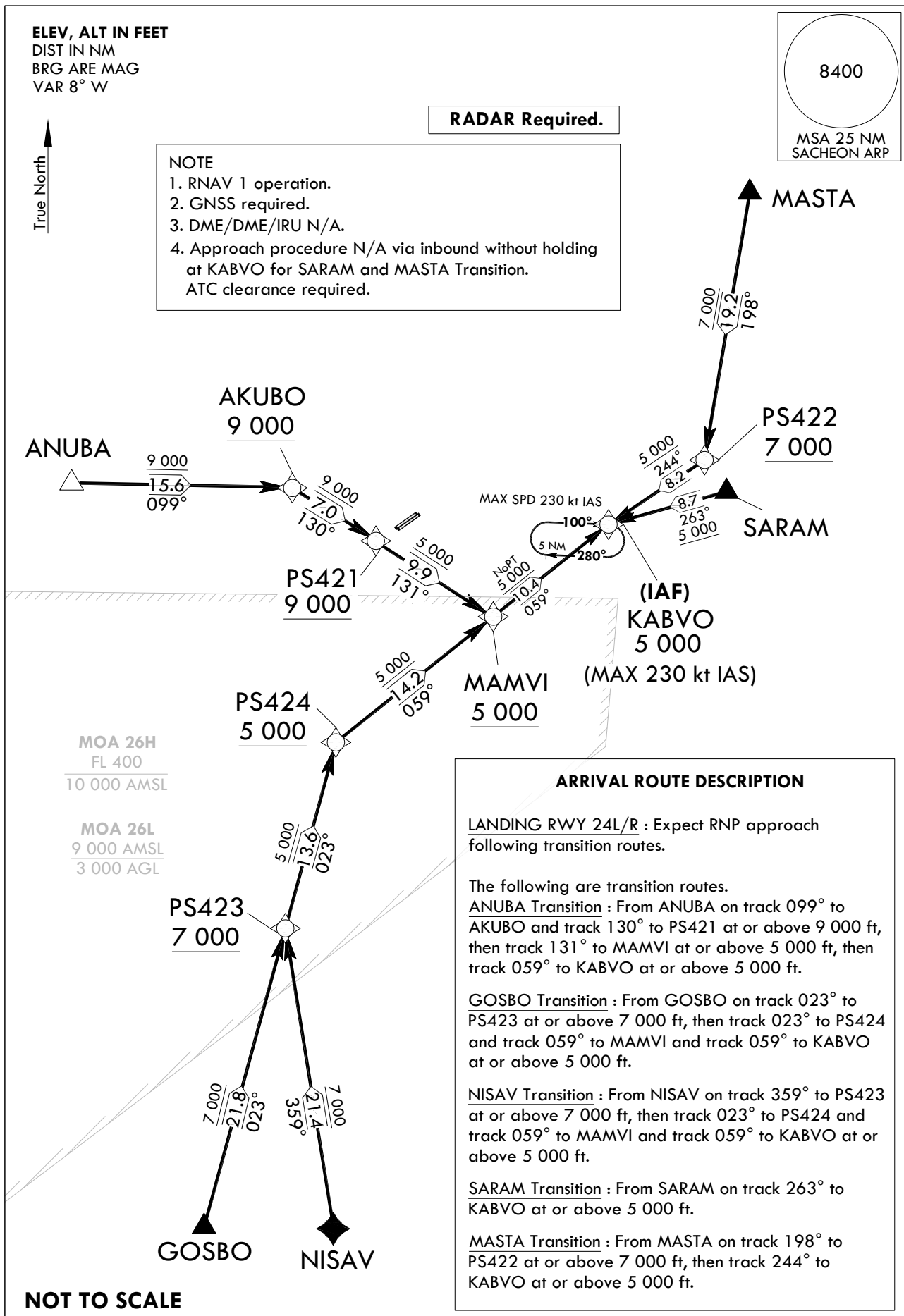
**STANDARD ARRIVAL CHART  
INSTRUMENT(STAR)**

TRANSITION ALT 14 000  
TRANSITION LVL FL 140

SACHEON APP 135.4 344.7  
SACHEON TWR 118.675 236.6  
305.4

**SACHEON/Sacheon(RKPS)**  
**RWY 24L/R**  
**RNAV KABVO 1**

Note : Arrival under U.S. TERPS.



Change : Information of GOSBO, NISAV, SARAM, MASTA(reporting requirement) and KABVO(IAF).

SACHEON/Sacheon(RKPS)  
RWY 24L/R  
RNAV KABVO 1

## AERONAUTICAL DATA TABULATION

## Standard Instrument Arrival Procedure Coding Tables

RNAV KABVO 1 - ANUBA Transition

Serial Number	Path Descriptor	Waypoint Identifier	Fly-over	Course/Track °M(°T)	Distance (NM)	Turn direction	Altitude (ft)	Speed (kt)	Coordinates	VPA/RDH	Navigation specification	Remarks
001	TF	ANUBA	-	-	-	-	-	-	35°07'45.9"N 127°35'22.8"E	-	RNAV 1	-
002	TF	AKUBO	-	099 (090.4)	15.6	-	+9 000	-	35°07'37.1"N 127°54'22.8"E	-	RNAV 1	-
003	TF	PS421	-	130 (121.7)	7.0	-	+9 000	-	35°03'56.2"N 128°01'37.7"E	-	RNAV 1	-
004	TF	MAMVI	-	131 (122.3)	9.9	-	+5 000	-	34°58'38.8"N 128°11'46.3"E	-	RNAV 1	-
005	TF	KABVO	-	059 (050.9)	10.4	-	+5 000	-230	35°05'13.6"N 128°21'37.6"E	-	RNAV 1	IAF

RNAV KABVO 1 - GOSBO Transition

Serial Number	Path Descriptor	Waypoint Identifier	Fly-over	Course/Track °M(°T)	Distance (NM)	Turn direction	Altitude (ft)	Speed (kt)	Coordinates	VPA/RDH	Navigation specification	Remarks
001	TF	GOSBO	-	-	-	-	-	-	34°15'16.8"N 127°47'34.4"E	-	RNAV 1	-
002	TF	PS423	-	023 (014.5)	21.8	-	+7 000	-	34°36'26.4"N 127°54'12.0"E	-	RNAV 1	-
003	TF	PS424	-	023 (014.6)	13.6	-	+5 000	-	34°49'38.7"N 127°58'21.9"E	-	RNAV 1	-
004	TF	MAMVI	-	059 (050.8)	14.2	-	+5 000	-	34°58'38.8"N 128°11'46.3"E	-	RNAV 1	-
005	TF	KABVO	-	059 (050.9)	10.4	-	+5 000	-230	35°05'13.6"N 128°21'37.6"E	-	RNAV 1	IAF

Change : Information of remarks for KABVO.

SACHEON/Sacheon(RKPS)  
RWY 24L/R  
RNAV KABVO 1

## AERONAUTICAL DATA TABULATION

## Standard Instrument Arrival Procedure Coding Tables

RNAV KABVO 1 - NISAV Transition

Serial Number	Path Descriptor	Waypoint Identifier	Fly-over	Course/Track °M(°T)	Distance (NM)	Turn direction	Altitude (ft)	Speed (kt)	Coordinates	VPA/ RDH	Navigation specification	Remarks
001	TF	NISAV	-	-	-	-	-	-	34°15'19.0"N 127°58'35.0"E	-	RNAV 1	-
002	TF	PS423	-	359 (350.3)	21.4	-	+7 000	-	34°36'26.4"N 127°54'12.0"E	-	RNAV 1	-
003	TF	PS424	-	023 (014.6)	13.6	-	+5 000	-	34°49'38.7"N 127°58'21.9"E	-	RNAV 1	-
004	TF	MAMVI	-	059 (050.8)	14.2	-	+5 000	-	34°58'38.8"N 128°11'46.3"E	-	RNAV 1	-
005	TF	KABVO	-	059 (050.9)	10.4	-	+5 000	-230	35°05'13.6"N 128°21'37.6"E	-	RNAV 1	IAF

RNAV KABVO 1 - SARAM Transition

Serial Number	Path Descriptor	Waypoint Identifier	Fly-over	Course/Track °M(°T)	Distance (NM)	Turn direction	Altitude (ft)	Speed (kt)	Coordinates	VPA/ RDH	Navigation specification	Remarks
001	TF	SARAM	-	-	-	-	-	-	35°07'36.3"N 128°31'46.7"E	-	RNAV 1	-
002	TF	KABVO	-	263 (254.1)	8.7	-	+5 000	-230	35°05'13.6"N 128°21'37.6"E	-	RNAV 1	IAF

RNAV KABVO 1 - MASTA Transition

Serial Number	Path Descriptor	Waypoint Identifier	Fly-over	Course/Track °M(°T)	Distance (NM)	Turn direction	Altitude (ft)	Speed (kt)	Coordinates	VPA/ RDH	Navigation specification	Remarks
001	TF	MASTA	-	-	-	-	-	-	35°28'47.0"N 128°33'39.6"E	-	RNAV 1	-
002	TF	PS422	-	198 (189.3)	19.2	-	+7 000	-	35°09'49.7"N 128°29'52.1"E	-	RNAV 1	-
003	TF	KABVO	-	244 (235.8)	8.2	-	+5 000	-230	35°05'13.6"N 128°21'37.6"E	-	RNAV 1	IAF

Change : Information of remarks for KABVO.

**INTENTIONALLY**

**LEFT**

**BLANK**



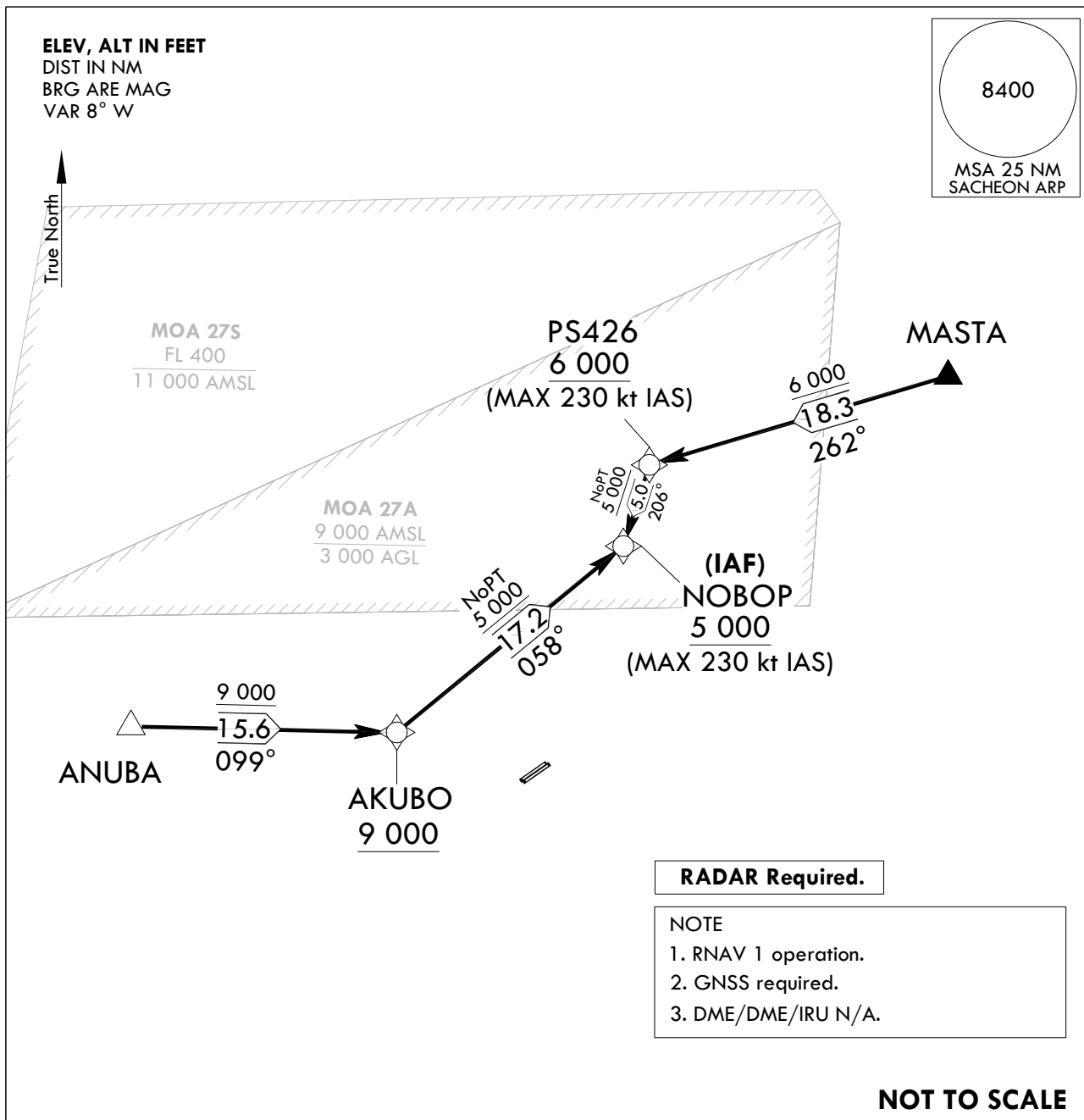
**STANDARD ARRIVAL CHART  
INSTRUMENT(STAR)**

TRANSITION ALT 14 000  
TRANSITION LVL FL 140

SACHEON APP 135.4 344.7  
SACHEON TWR 118.675 236.6  
305.4

**SACHEON/Sacheon(RKPS)**  
**RWY 24L/R**  
**RNAV NOBOP 1**

Note : Arrival under U.S. TERPS.



**ARRIVAL ROUTE DESCRIPTION**

LANDING RWY 24L/R : Expect RNP approach following transition routes.

The following are transition routes.

ANUBA Transition : From ANUBA on track 099° to AKUBO at or above 9 000 ft, then track 058° to NOBOP at or above 5 000 ft.

MASTA Transition : From MASTA on track 262° to PS426 at or above 6 000 ft, then track 206° to NOBOP at or above 5 000 ft.

Change : Information of MASTA(reporting requirement) and NOBOP(IAF).

SACHEON/Sacheon(RKPS)  
RWY 24L/R  
RNAV NOBOP 1

## AERONAUTICAL DATA TABULATION

## Standard Instrument Arrival Procedure Coding Tables

RNAV NOBOP 1 - ANUBA Transition

Serial Number	Path Descriptor	Waypoint Identifier	Fly-over	Course/Track °M(°T)	Distance (NM)	Turn direction	Altitude (ft)	Speed (kt)	Coordinates	VPA/RDH	Navigation specification	Remarks
001	TF	ANUBA	-	-	-	-	-	-	35°07'45.9"N 127°35'22.8"E	-	RNAV 1	-
002	TF	AKUBO	-	099 (090.4)	15.6	-	+9 000	-	35°07'37.1"N 127°54'22.8"E	-	RNAV 1	-
003	TF	NOBOP	-	058 (050.0)	17.2	-	+5 000	-230	35°18'40.4"N 128°10'27.3"E	-	RNAV 1	IAF

RNAV NOBOP 1 - MASTA Transition

Serial Number	Path Descriptor	Waypoint Identifier	Fly-over	Course/Track °M(°T)	Distance (NM)	Turn direction	Altitude (ft)	Speed (kt)	Coordinates	VPA/RDH	Navigation specification	Remarks
001	TF	MASTA	-	-	-	-	-	-	35°28'47.0"N 128°33'39.6"E	-	RNAV 1	-
002	TF	PS426	-	262 (253.2)	18.3	-	+6 000	-230	35°23'27.3"N 128°12'16.3"E	-	RNAV 1	-
003	TF	NOBOP	-	206 (197.3)	5.0	-	+5 000	-230	35°18'40.4"N 128°10'27.3"E	-	RNAV 1	IAF

Change : Information of remarks for NOBOP.